

## DON'T FORGET

- Follow current Covid guidelines.
- A-Z map of London. (if you have one)
- Some of the churches on the route may provide refreshments.
- A snack or picnic lunch. (some food may be available on the route too)
- We walk whatever the weather.
- Look for things to pray about as you walk.
- Start at any time after 9am at any church checkpoint, but with time to get back again by 5pm.
- Get your map stamped at each checkpoint.
- Use the quiz sheet to draw your attention to points of interest along the way.
- Take time to learn about the churches you visit and about Unlock.

Please work with us to ensure that the **2022** walk generates more income to fund Unlock's vital work. You can do this by:

**Seriously & prayerfully** consider how you can support Unlock's ongoing work.

**Sponsorship** – get as many sponsors as you can, by explaining to them what you are raising money for; and ensure that they gift aid their sponsorship wherever possible.

**Promoting Unlock's work in your church or area**  
Put up a display in your church, or write something for your church magazine.

**Bring along some friends** - encourage new people to join you for an Unlock London Walk experience in **2022**.

**Through your Church** – persuade your church to give funds to support Unlock as part of its regular missionary giving.

**Donations** – you can make a personal donation to Unlock's work, either on a one off basis, or better yet, at regular intervals.

The aims of the Unlock London Walk are:

- **To raise money for Unlock's work in deprived urban areas across the UK.**
- **To raise awareness of the issues of exclusion that Unlock exists to address.**
- **To showcase the ministry of churches in urban areas. Come and see what God is doing in the city.**
- **To encourage churches in more affluent parts of the country to support the work of their fellow Christians in the inner city.**
- **To give 100s of people an opportunity for an unusual and enlightening day out in London.**

Unlock works by running local projects in UK cities, where a trained Unlock Development Worker, accompanied by a local team, is employed to encourage and enable local people and their leaders to grow in faith and confidence by:

- UNLOCKING REAL LIFE STORIES OF URBAN PEOPLE**
- REVEALING GOOD NEWS OF THE DOWN TO EARTH CHRIST**
- RELEASING LIFE CHANGING SKILLS AND CONFIDENCE**



Registered Charity: 313454

2021 donations from the virtual walk have raised over £10,500. In a difficult economic climate this is a great testament to the commitment of our faithful band of walk supporters, and we really appreciate it. However, over the 2 years impacted by COVID our walk income is down by around £15,000. We must not be complacent and Unlock needs your support more than ever. Unlock relies heavily on income from the Unlock London walk to fund our work. Because we are directly engaged in Christian Mission it is very difficult to secure other types of funding. So please keep up the momentum and do all you can to maximise the returns from the 2022 Walk. Unlock local projects are making a real difference, bringing the gospel to people that the churches haven't been able to reach; and there's more we can deliver if we have the resources!

## MAKING YOUR DONATION COUNT EVEN MORE

Donating on-line saves Unlock valuable staff time and money and is quick and easy to do via:

### Give as You Live Donate

If you want a quicker simpler way to solicit and collect your Unlock sponsorship you can now register with Give as You Live Donate, who will collect all your sponsor money, claim the gift aid, and send it all to Unlock on your behalf. This allows you to promote your fundraising for Unlock via your facebook page or by e-mail, and to collect sponsorship from people at a distance who you do not regularly meet up with. It saves you managing a pile of small change or writing a cheque. It also saves Unlock time and money, making your support more valuable to us, because more of it can be channelled straight into our front line work with the Bible amongst the urban poor.

For further details on how to request sponsorship or make a donation go to

[unlock-urban.org.uk/support\\_walk.php](http://unlock-urban.org.uk/support_walk.php)

### Give as You Live - For On-line Shoppers

Would you like to support Unlock every time you shop online at no cost to you and no cost to us? With Give as You Live, thousands of major brands including Amazon, Play.com, John Lewis and Expedia have signed up to donate a percentage of every purchase you make online to Unlock. The average shopper will raise £2.10 per month through what they already buy online.

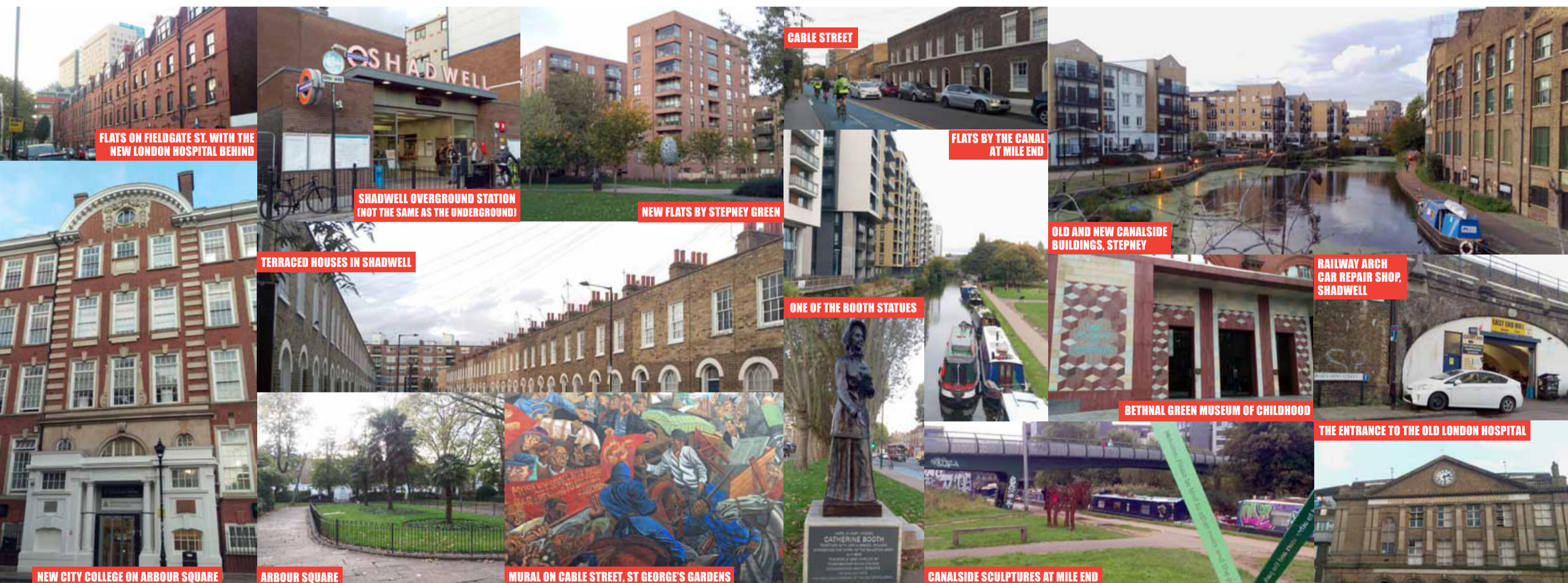
**Give as You Live** is easy to set up and use. Simply visit **Give as You Live** at [giveasyoulive.com/join/unlock](http://giveasyoulive.com/join/unlock) for full details, try it today and help raise valuable funds for Unlock.

The following are available from [unlock-urban.org.uk](http://unlock-urban.org.uk), or from the Unlock National Office:

- **More copies of this map brochure & sponsor forms.**
- **Resources to help you promote Unlock's work.**
- **Information about Unlock local projects – real stories of real people.**
- **Unlock resources free to use.**

Unlock  
15 Station Road  
Rotherham  
S60 1HN  
Tel: 01709 380318

# UNLOCK LONDON WALK 39 IN THE SHADOWS OF THE TOWER SATURDAY 23 APRIL 2022 9AM TO 5PM



# HISTORY, HOUSING AND HEROES

## RICH OR POOR?

This year's walk takes place within one inner London borough – that of Tower Hamlets, known to be one of the poorest areas of the capital. It certainly has quite a few tower-blocks and lots of uncollected rubbish! It has a large percentage of social housing rather than owner-occupied. The unequal nature of the area, where significant poverty sits beside great wealth such as Canary Wharf, makes the situation particularly acute. However, Tower Hamlets is rich in other ways: rich in history and unexpectedly rich in green spaces like vast Victoria Park, the splendidly wild Cemetery and the continuous canal-side walk. It is rich in "live" churches which have grown over the past 30 years. A night-shelter is provided seven months of the year by a partnership of local churches. Every night of the week the shelter is in a different church and run by volunteers.

## HEROES AND HOSPITALS

The East End is famous for the Booths (William and Catherine) who founded the Salvation Army in 1865 and Dr Barnardo who established the first Ragged School in 1867 and went on to provide homes for poor children. Less well-known is Annie Macpherson who assisted "gutter" boys and girls, creating "The Beehive" in Bethnal Green. Another charitable institution is the Royal London Hospital, founded in 1757. Since 2012 it has been in a pretty glass tower overlooking its previous premises which are to become Tower Hamlets Town Hall, and making good public use of heritage buildings. In Bethnal Green, The Chest Hospital, built in the 1850s, has now moved to St Bartholomew's in the city. The Grade 2 building is to be developed into luxury flats.

## AFFORDABLE HOUSING

The average cost of renting in Tower Hamlets is now more than the average household income: it is a big issue. This was true even 120 years ago when the first council estate was built in 1900 around Arnold Circus. The very poor were forcibly removed from the notorious Old Nichol and could not afford to return to the beautiful new Boundary Estate in the NW of Bethnal Green. In the 1960s housing was a problem that concerned Roger Dowley, a member of East London Tabernacle and co-founder of Evangelical Urban Training Project – now Unlock. He created a housing association making it possible for keyworkers to stay in the inner city. This association, now called Gateway, has named property after him: Roger Dowley Court is

just north of Old Ford Road. Another housing initiative from worshippers at East London Tabernacle is the Landmark Trust, which campaigned for affordable housing when St Clements, Bow, (formerly a workhouse and then a Psychiatric Hospital) was redeveloped in the last decade.

## SPITALFIELDS

Spitalfields Fruit and Vegetable Wholesale Market, which had traded from 1638, moved to Hackney Marshes in 1991 to get easier access for lorries. The old site (bordering Bishopsgate with its luxury offices) is now full of trendy "upmarket" eateries. Watney market, in complete contrast, is cheap and cheerful. As in

Whitechapel or Bethnal Green, it would be a challenge to find a stallholder whose first language is English. If you want to buy Bengali vegetables, this is the place to be! If you want to buy a curry, Brick Lane offers you a wide choice. Once an area lived in by French Protestant Huguenot weavers and silk-merchants escaping persecution, it was then the centre for Jewish immigrants and the rag-trade. It's now "Bangla-town" and the clothing factories have almost disappeared. Look out for Brick Lane Mosque which started life as a Protestant chapel, was then a synagogue and is now a Muslim place of worship.

## TO KEEP OR TO LOSE?

In the grounds of the Chest Hospital there is one of the last remaining mulberry trees in the East End, said to be more than 400

years old. It is under threat by developers. Similarly, Whitechapel Bell Foundry, which ceased making bells in 2017 after 450 years (of which 250 were on this site) needs to be preserved. Land is extremely valuable and so the pressure to make money is always in conflict with the desire to protect our heritage. Each controversy demands more vigilance and energy: to keep or to lose?

## GOING GREEN

Finally, what riches can the 2020 Walk show the naturalist? The longest stretch of off-road walking is between Stepney and Mile End. Take note of the Green Bridge over the Mile End Road at the 4-way junction. It's part of the scheme to have "green" all the way from Victoria Park down to the River Thames. You may be surprised by what riches Tower Hamlets has to offer!